

LBOX-600, LBOX-ROC1, LBOX-ROC2

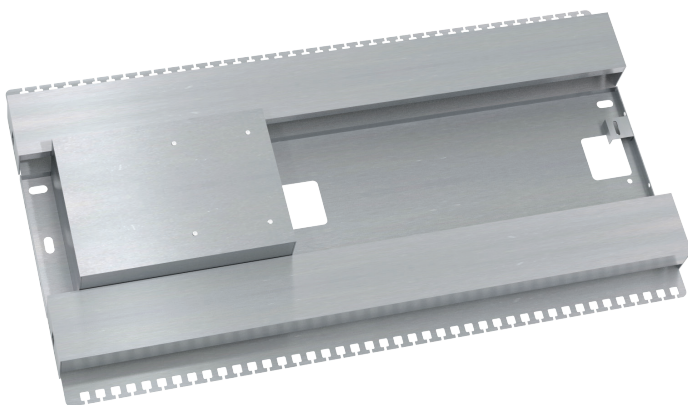


With L-BOX System Distribution Boxes, LOYTEC offers the possibility of a decentralized installation of hardware components, e.g. for the flexible room automation system L-ROC.

For the typical requirements of room automation projects with reoccurring segments, the hardware designed for a certain amount of segments (e.g. 8 or 16 segments, usually I/O modules) can be installed in L-BOX. L-BOX is normally mounted in an intermediate ceiling or double floor. The cabling of the field components in the segment (sun-blind motor, actuators for valves, window contacts etc.) can be connected to the L-BOX in a star topology. In the L-BOX, the cables are strain-relieved and directly wired to the I/O modules.

Specifications LBOX-600

Dimensions (mm)	600 x 250 x 82 (L x W x H), DIM049
Device Installation	485 mm long, top hat rail (35 mm wide) for snap-on mounting of equipment (EN 50022)
Material	Metal, DC01 Sendzimir galvanized
Order number	Product description
LBOX-600	L-BOX System Distribution Box for room automation components, 600 x 250 x 82 (L x W x H in mm)



LBOX-ROC1, LBOX-ROC2

The LBOX-ROC1 and the LBOX-ROC2 are designed to ease hardware installation and cabling of LROC-40x room automation projects.

It consists of built-in terminals and strain reliefs, and it is normally mounted in an intermediate ceiling or double floor.

The LBOX-ROC2 has the same features as the LBOX-ROC1, but instead of the 75mm DIN rail it has a built-in 60W 24 VDC power supply.

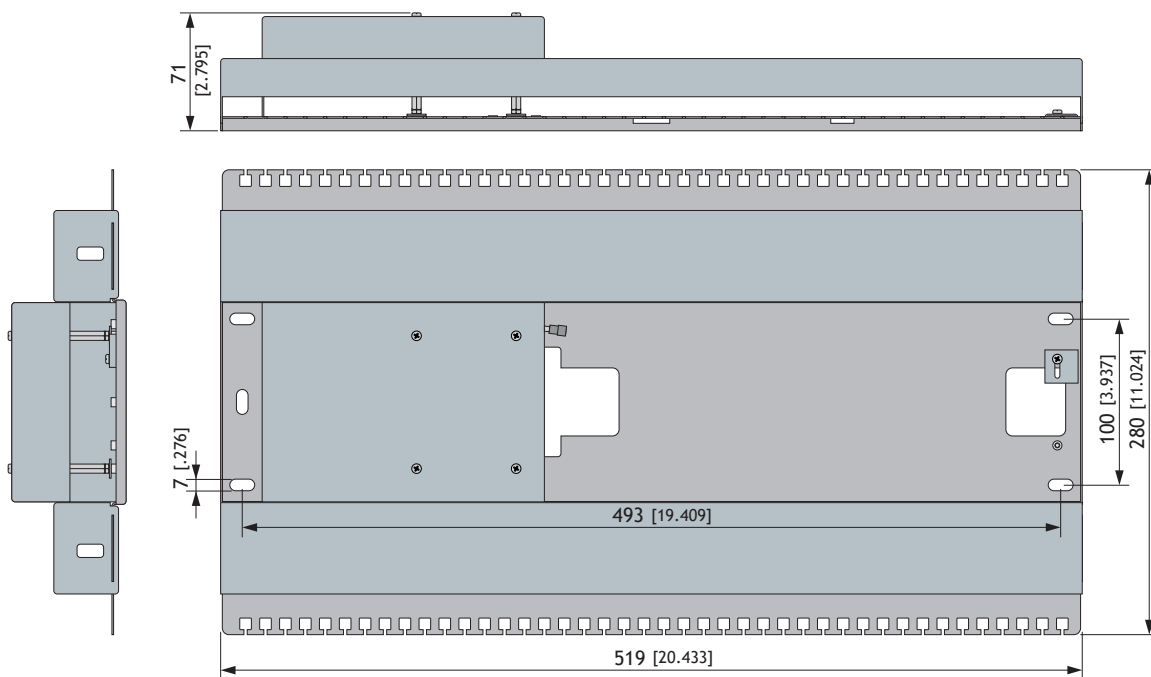
Specifications LBOX-ROC1, LBOX-ROC2

Dimensions (mm)	519 x 280 x 71 (L x W x H), DIM048
Device Installation	suitable for the installation of an LROC-400, LROC-401, or LROC-402 Room Controller
Material	Metal, DC01 Sendzimir galvanized
Input voltage	100 – 240 VAC, 50 – 60 Hz (LBOX-ROC2 only)
Supply voltage	24 VDC 60 W (LBOX-ROC2 only)
Order number	Product description
LBOX-600	L-BOX System Distribution Box for room automation components, 600 x 250 x 82 (L x W x H in mm)
LBOX-ROC1	System Distribution Box for LROC-40x Room Controller, 519 x 280 x 71 (L x W x H in mm)
LBOX-ROC2	System Distribution Box for LROC-40x Room Controller, 60 W 24 VDC power supply

Dimensions of the devices in mm and [inch]

DIM048

LBOX-ROC1
LBOX-ROC2



SCALE 1:4
20 0 20 40 60 80 100 mm

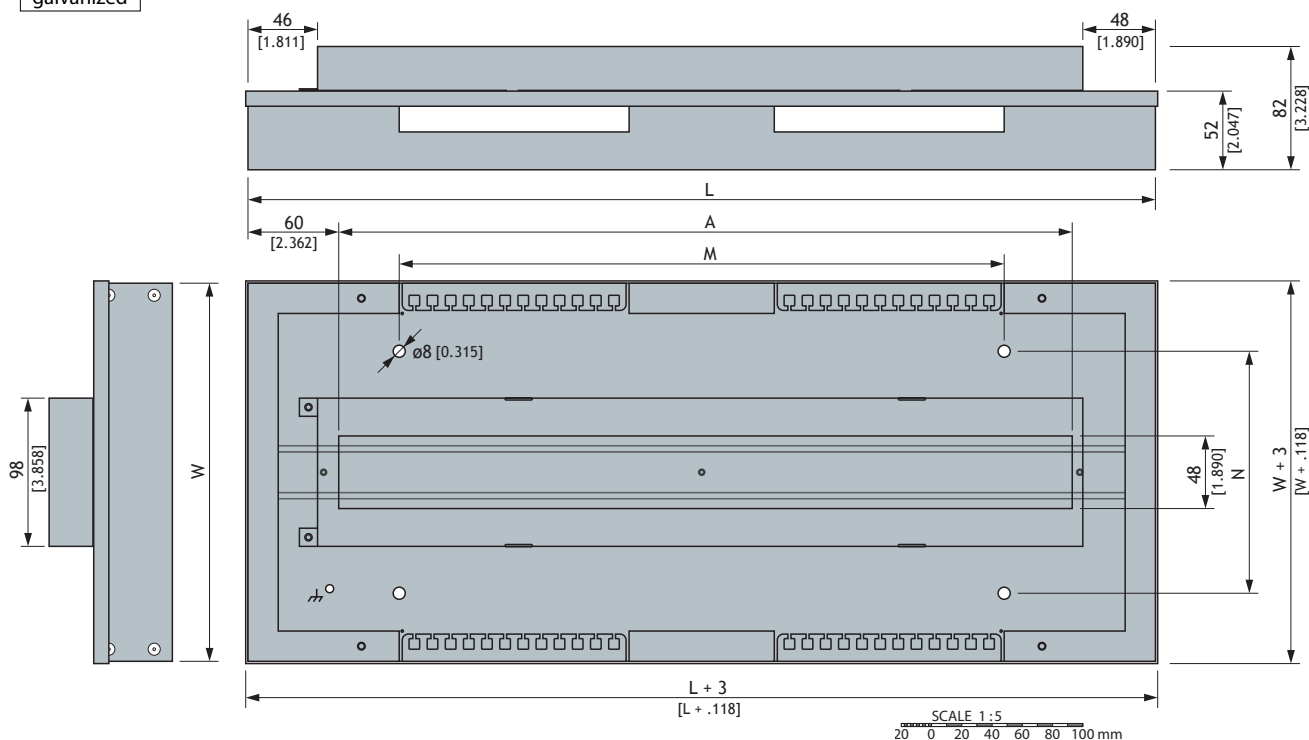
DIM049

LBOX-600

Metal
DC01
Sendzimir
galvanized

	L	W	A	M	N
LBOX-600	600 [23.622]	250 [9.843]	485 [19.094]	400 [15.748]	160 [6.299]

M, N ... mounting hole dimensions, \varnothing 8.0 [0.315]



SCALE 1:5
20 0 20 40 60 80 100 mm