

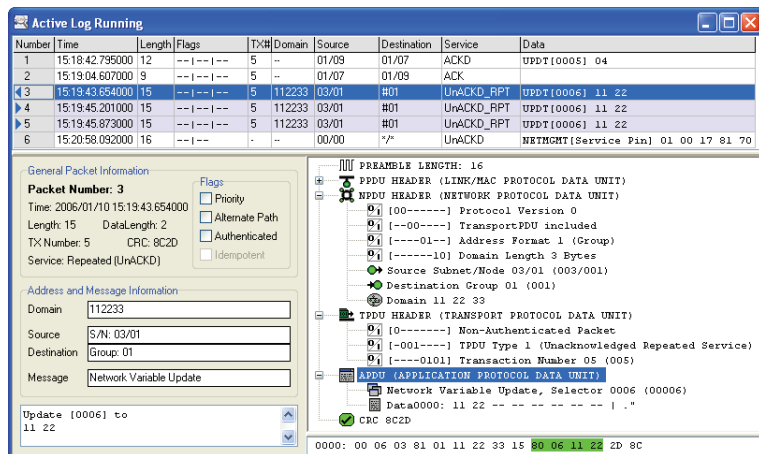
LPA-SET-USB, LPA-USB, LPA-IP, LPA-SW, LPA-IP-SW

Datasheet #89010520



The LOYTEC Protocol Analyzer (LPA) for LonMark Systems captures all data packets on CEA-709 or IP-852 networks and displays all recorded packets on a PC screen. The LPA software provides a comprehensive set of functions and methods to view, filter, and analyze data packets down to bit level.

The long time recording capability helps to find even intermittent faults on the network. When the system is configured by an LNS based tool, the LPA software can browse the database in order to display the node and network variable names. Together with all LOYTEC devices featuring a Remote Network Interface (RNI), the LPA software can record packets even from remote twisted-pair channels.



With a single mouse-click, the built-in report function creates reports (text files) showing the health condition of the investigated channel and gives hints and tips on how to solve problems on this channel.

The intuitive and easy-to-use LPA software runs on all LOYTEC network interfaces. On the NIC852 network interfaces, it supports the remote LPA functionality. Each LPA-SW license must be registered for one LOYTEC NIC.

