

LPAD-7 Touch Panel

Installation instructions

Instructions de montage

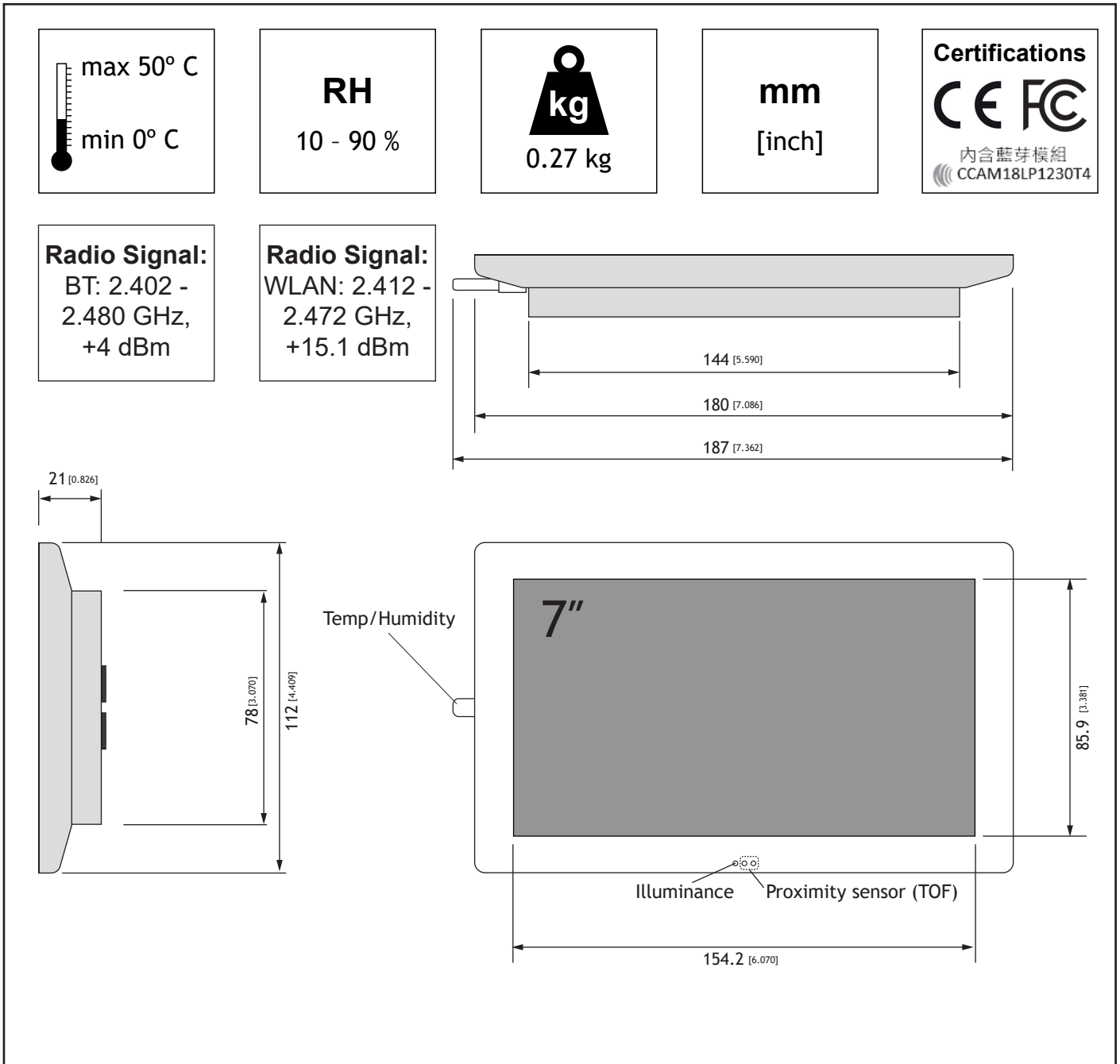
Montageanweisung

Montagevoorschrift

Istruzioni di montaggio

Instrucciones de montaje

Monteringsanvisning

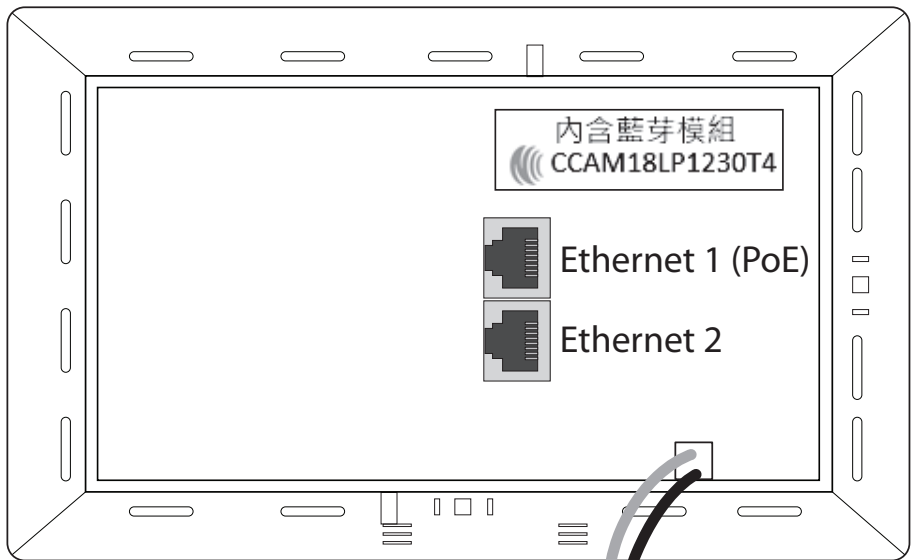
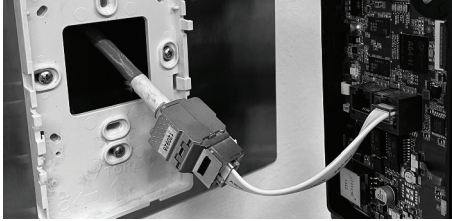


BACK SIDE

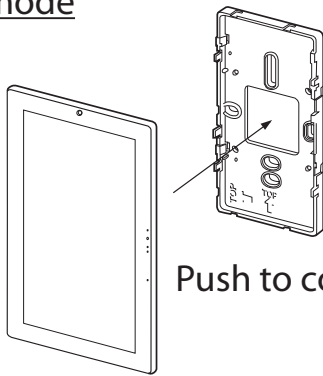
Use flexible Ethernet cable (included)



Order Number: 61009901



Portrait mode



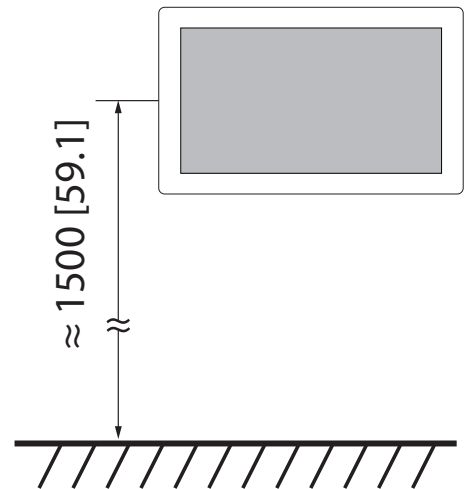
Push to connect parts

! Do not cover the ventilation slots on the back side of the device.

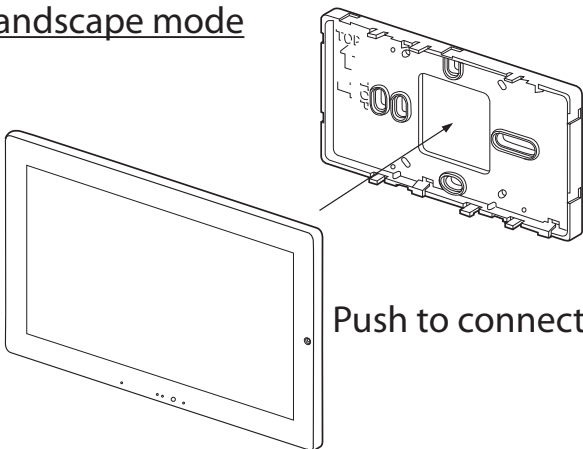
red + black
GND 24V DC supply



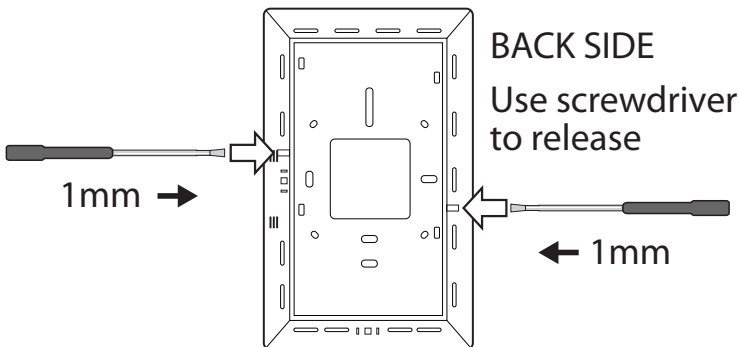
Mounting height:



Landscape mode



Push to connect parts



BACK SIDE

Use screwdriver to release

Automatic supply switching

